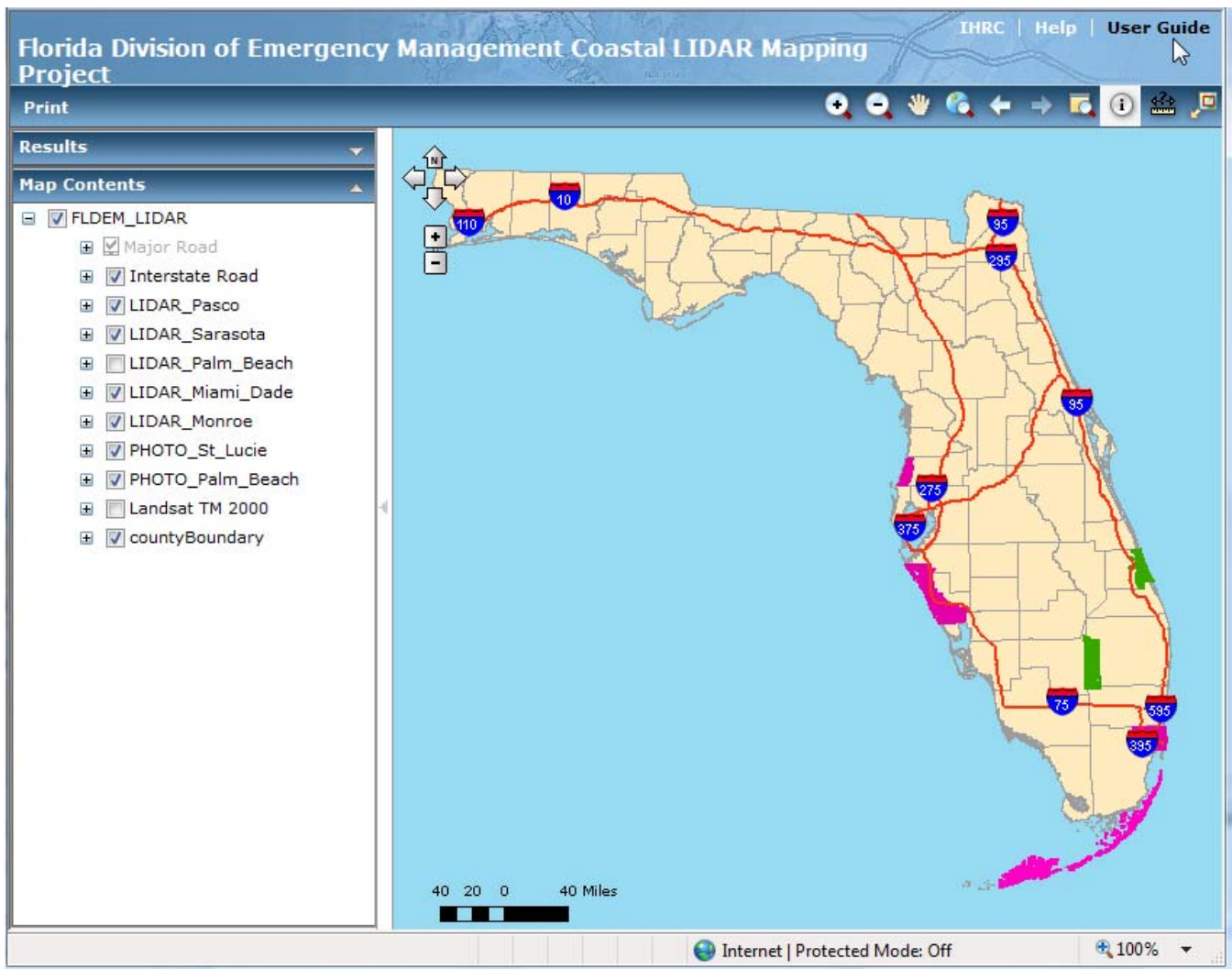


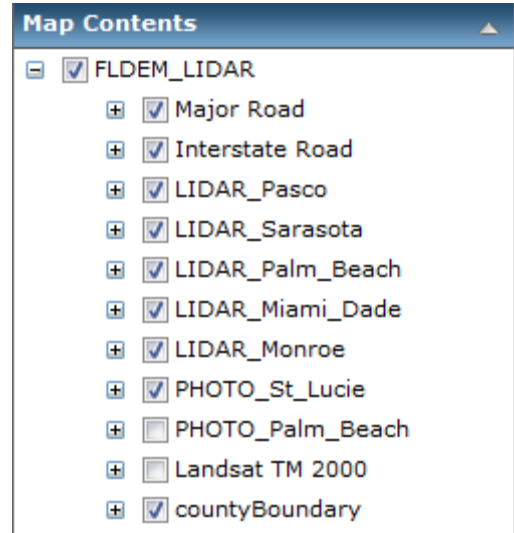
User Guide for Downloading LIDAR Data and Aerial Photos

The LIDAR tile shapefiles are displayed using purple color, while aerial photo shapefiles are displayed using green color. The names of LIDAR title shapefiles start with prefix "LIDAR", while the names of aerial photo tile shapefiles start with prefix "PHOTO". In addition to tile shapefiles, county, road, and Landsat image are also included in the map contents. These shapefiles which you can select and unselect are helpful for finding the location you are interested in.



Download LIDAR Tile

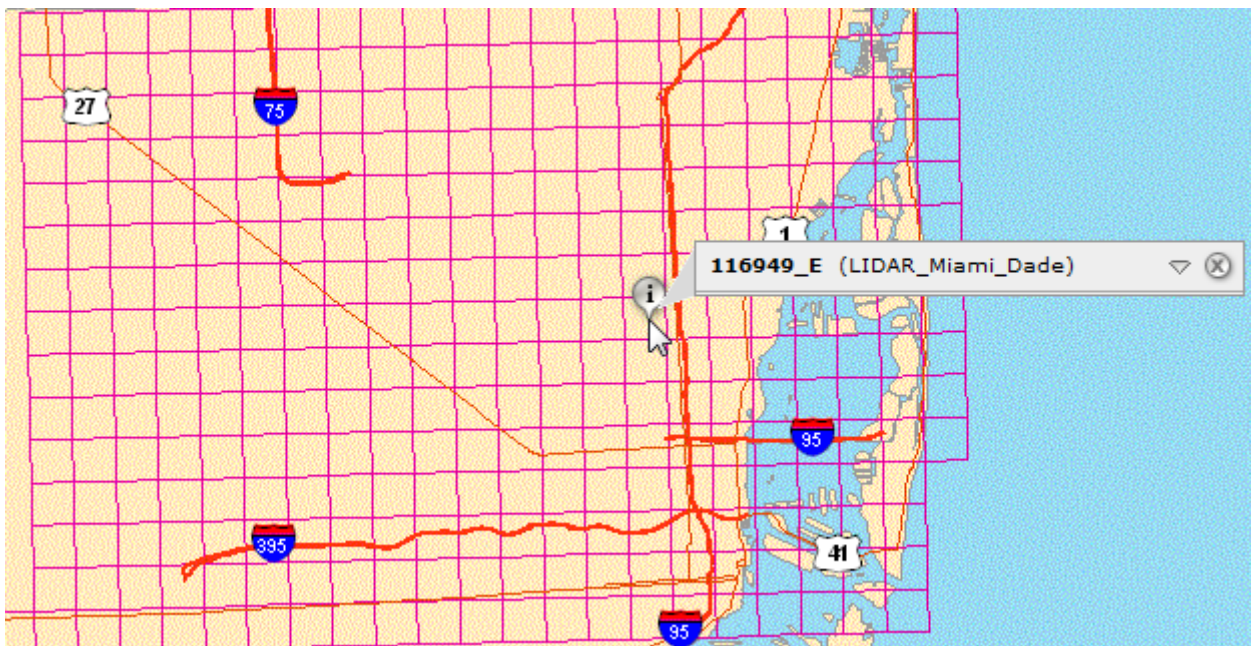
1. Make sure that LIDAR tile shapefiles (purple color) for the county where you want to download the data are selected



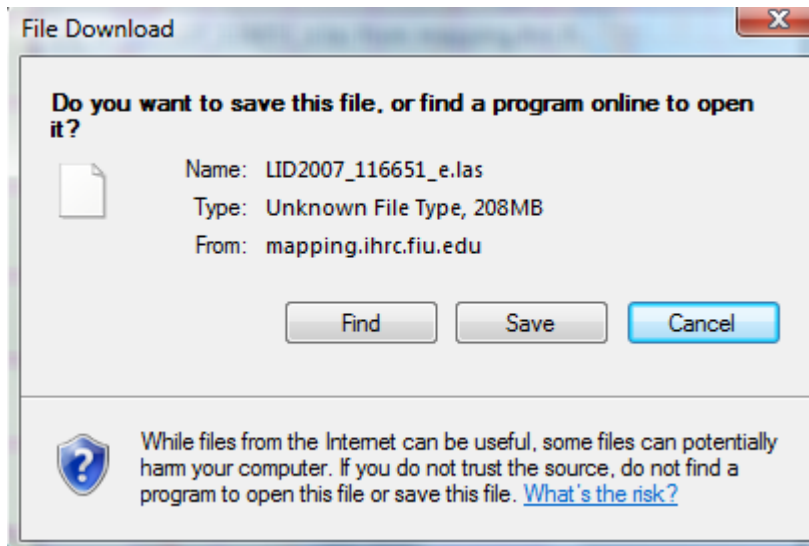
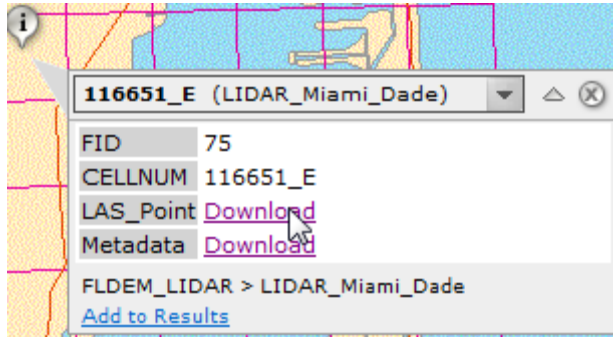
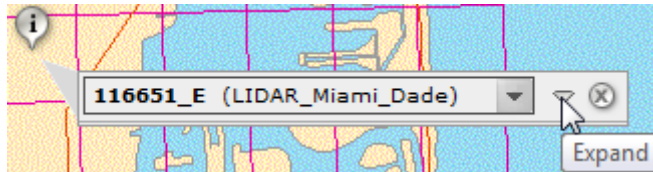
2. Zoom in to the interested area



3. Select files by clicking the tile using Map Identify tool



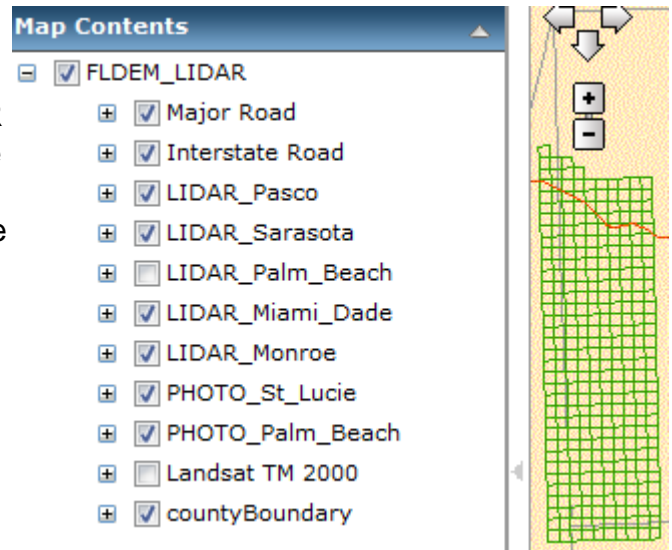
4. Expand selected record and download the LAS file and associated metadata by clicking “Download”



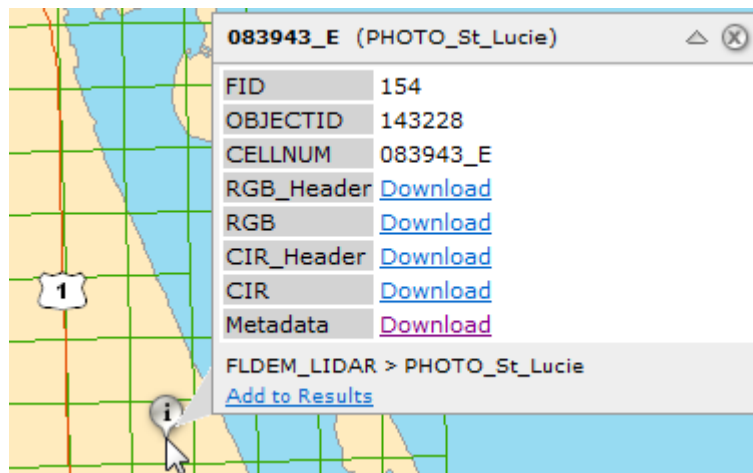
Note: LIDAR Data are in LAS (binary) format.

Download Aerial Photo Tile

1. Make sure that aerial photo tile shapefiles (green color) for the county where you want to download the data are selected. If both LIDAR and aerial photo tile shapefiles exist, select the aerial photo tile shapefile for the county (e.g. PHOTO_Plam_Beach) and unselect LIDAR tile shapefile (e.g., LIDAR_Palm_Beach).



2. Select and download aerial photos for a tile using Map Identify tool



Note: CIR: Color Infrared Image
 RGB: Natural colored Image